

Get ready and vote in a by-election

The Easy Read guide to voting



Developed with input from
People First New Zealand, Ngā Tāngata Tuatahi



About this booklet



This booklet has information about how to enrol and vote in a by-election.



About by-elections



People in New Zealand vote for the people and parties who will:

- be in Parliament
- make decisions that affect your life.

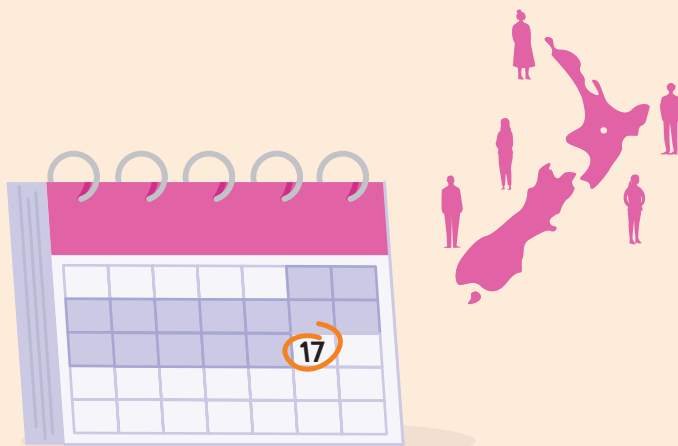
Parliament is all the people and parties who have been chosen in the election.

Some of the parties in Parliament form the **Government**.



The **New Zealand Government** decides on things that affect your life like:

- schools
- hospitals
- roads.



Usually all of New Zealand chooses all the people who will be in Parliament on the same day.

This is called a **general election**.

About by-elections



The person who represents your local area in Parliament is called a **member of Parliament**.



Sometimes a member of Parliament needs to stop being in Parliament.

This might be because they:

- get a new job
- are very ill
- die.

This means there needs to be a new member of Parliament decided before the next general election.



To choose a new MP a kind of election called a **by-election** is held.

If you live in the same local area you can vote for the new member of Parliament.

Your local area is called an **electorate**.

About choosing who to vote for



It is your choice who you want to vote for in a by-election.

Nobody is allowed to tell you who to vote for.



Here is a list of where you could find more information to help you choose who to vote for:

- newspaper
- television
- radio
- public meetings
- your friends
- your family.



You have 1 vote in a by-election.

You can vote for the person you want to be your member of Parliament.

This is different to a general election where you vote for a party as well as a person.

About getting enrolled to vote

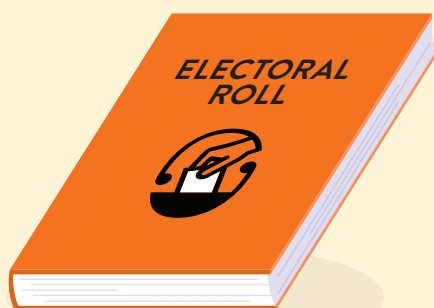


You have to be enrolled to vote in a by-election

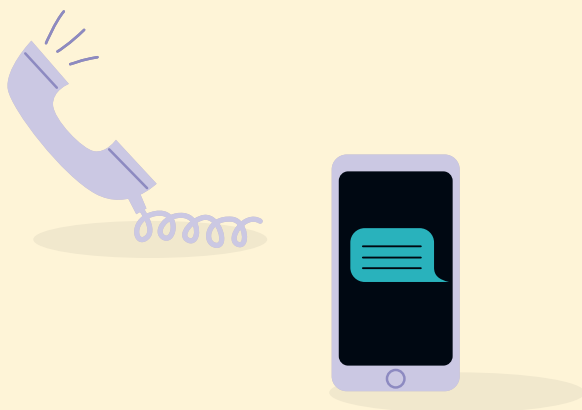
It is easy to:

- enrol to vote
- check your information
- update your information like your address.

When you enrol your name will go on the **electoral roll**.

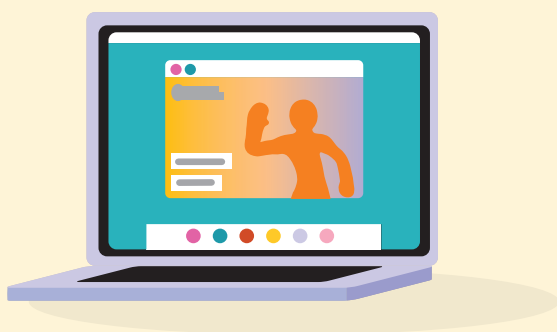


The **electoral roll** is the list of all the people who have enrolled to vote.



To get an enrolment form you can:

- call **0800 36 76 56**
- text your name and address to **3676**
- visit **vote.nz**.

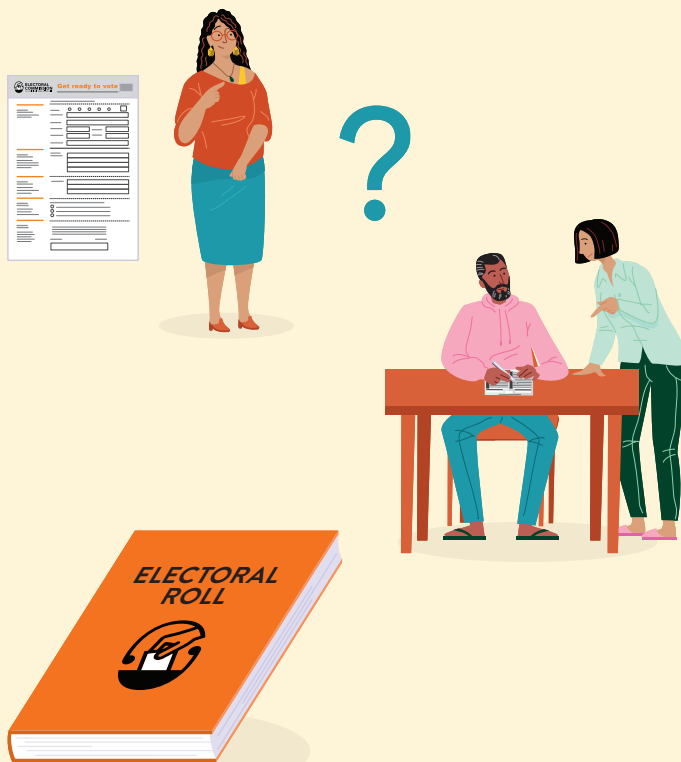


You can also enrol online at **vote.nz**

To enrol online you will need to use your:

- New Zealand driver licence or
- New Zealand passport or
- RealMe verified identity.

About getting enrolled to vote

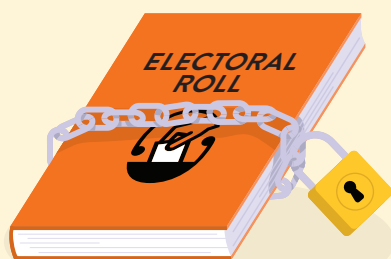


The enrolment form will ask for information about you.

It is important to put the right information on the enrolment form.

If you need assistance to put your information on the enrolment form ask someone to support you.

After you have enrolled to vote your name will go on the electoral roll.



If you are worried about your safety if your name goes on the electoral roll you can ask to go on the **Unpublished Roll**.

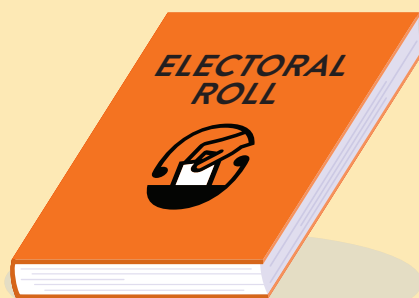
Your personal details will not be given to anyone.



You must update your information on the electoral roll if you:

- move to a different place
- change your name.

Who can get enrolled to vote?



In New Zealand you must **enrol to vote** if you:

- are 18 years or older and
- have lived in New Zealand for more than one year at some time in your life and
- are a New Zealand citizen or permanent resident of New Zealand.



You can enrol to vote any time:

- before election day
- on election day.

You can also enrol at a voting place when you go to vote.

About how you can vote in a by-election



Election day is the date when the election happens.

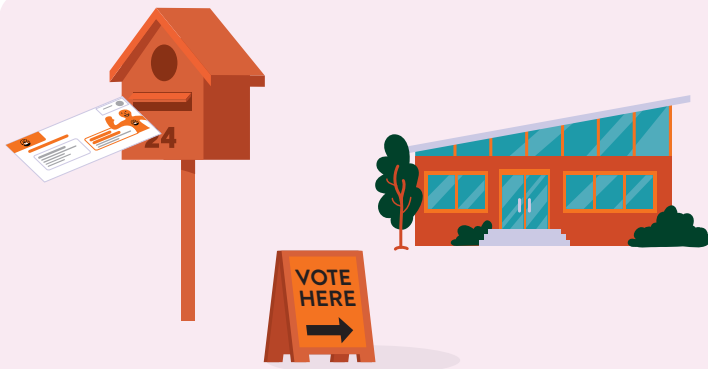
You can vote:

- on election day
- before election day

Voting places are open for up to 2 weeks before election day.

You can vote at any voting place in the electorate but it is best to vote close to home.

There will be someone at the voting place to show you what to do.



Do your best to enrol early.

If you enrol at least a month before election day you will get an information pack in the mail.

The information pack will arrive about a week before voting starts.

The information pack has:

- your EasyVote card
- when to vote
- a list of people to choose from.

About how you can vote in a by-election



When you go to a voting place take your **EasyVote card** with you.

Give your EasyVote card to the person that works at the voting place.

You can vote without an EasyVote card but it will take longer.



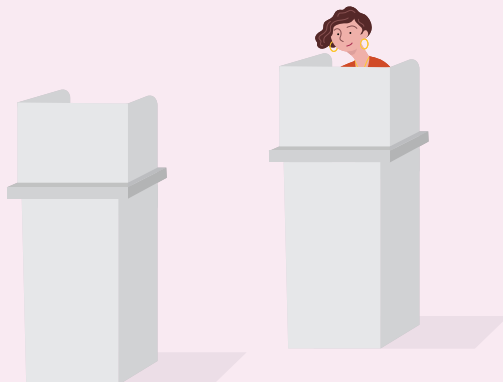
If you do not have an EasyVote card you will have to tell the person who works at the voting place your:

- full name
- address.



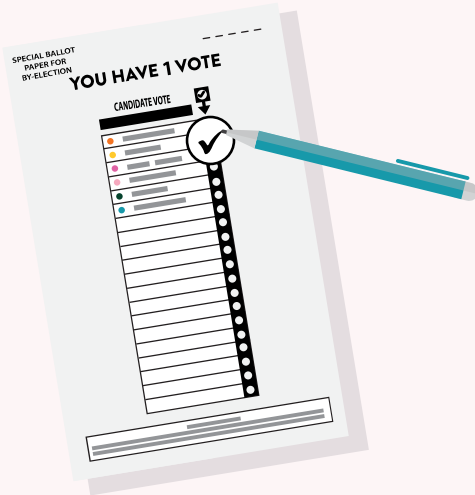
The person who works at the voting place will:

- find your name on the electoral roll
- put a line on the electoral roll to show you have voted
- give your voting paper to you.



After you get your voting paper take it behind the voting screen.

How to cast your vote



You have one vote. It is for the candidate you want to be your local member of Parliament.

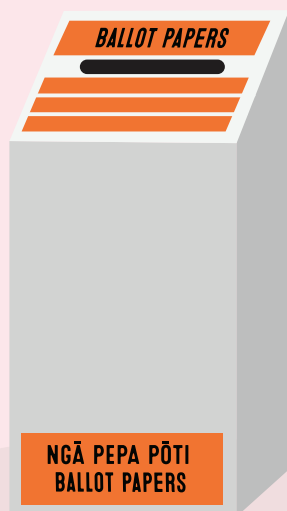
On your voting paper put a tick by the name of the person you want to represent your local area in Parliament.



After you have finished marking your voting paper:

- fold it in half
- put your voting paper for the election in the voting box for your **electorate**.

Your **electorate** is your local area.



Election workers at the voting place will show you what to do.

They will also make sure everyone has space when waiting to vote.

Voting support



You can get support to vote from a:

- friend
- person in your family
- person who works at the voting place.



A support person is allowed to:

- go with you behind the voting screen
- read out loud the words on the voting paper
- tick the voting paper if you ask them to.



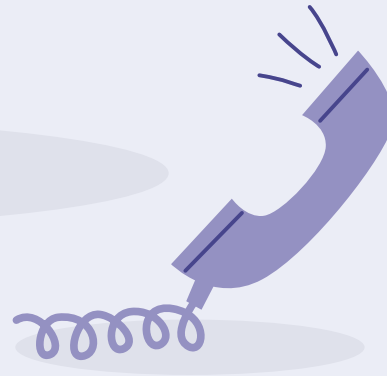
A support person is not allowed to tell you who to vote for.

More information about by-elections



To get more information about how to enrol and vote in a by-election

- visit **vote.nz**
- call **0800 36 76 56**.



If you cannot get to a voting place

If it is too hard for you to get to a voting place there are still ways you can vote.

If you are in a care home the person running the election will work with the person in charge of your care home to make sure everyone can vote.

If you are in hospital a family or friend can bring you your voting paper.

We can assist you to vote if you cannot get to a voting place because:

- you are ill
- you find it hard to move.

Find out more at **vote.nz** or call **0800 36 76 56** to talk about how we can support you.



34-42 Manners Street,
PO Box 3220, Wellington 6140.